

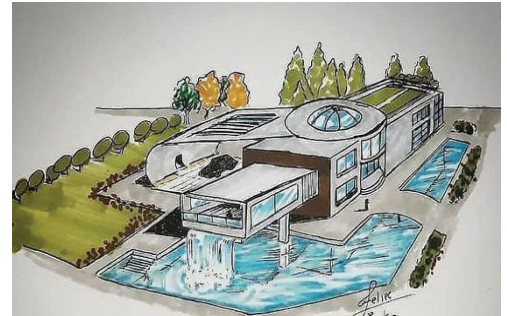
TONY'S CREEPY WORLD SPONSOR PACKAGE

FIRST, SOME THINGS THAT MAY NEED EXPLAINING



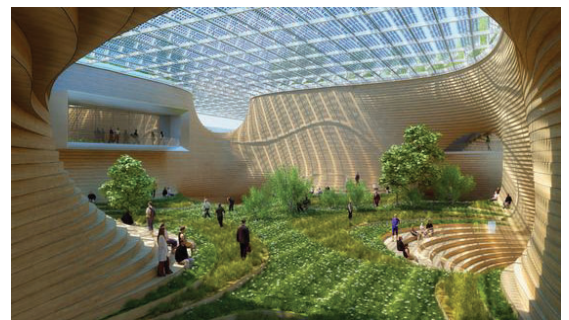
Our demo of Creepy World was a representation of a real location in a real world. As we go forward with Creepy World in virtual reality, we would like to bring to your attention that **NOTHING** in virtual reality is bound by reality; not what is inside the building or outside the building. There is no limit to the worlds within worlds we can create.

Our virtual world will be developed by the feedback we get from parents and educators. This world can be continually updated and expanded as our creativity builds upon itself.



<-- POSSIBLE
BUILDING ON
THE OUTSIDE

SINGLE ROOM
EXHIBIT ON THE
INSIDE -->



WHAT WE CAN DO FOR YOU

Our work with using insects to inspire scientific literacy in students has always been very popular with the media. At the time of this proposal being uploaded, we are already scheduled for 2 TV appearances later this month.

As with our pre-COVID proposal, our goal is to enhance your brand as pro-science, pro-education, as community activists, and an inspiration for future generations of scientists who may one day work for you. COVID-19 has forced us all to create new avenues of reaching out to our communities. With your financial support and combined marketing resources, we believe this virtual world can not only educate but alleviate some of the anxiety we all feel in our attempts to keep ourselves safe and sane. When parents look to this activity for their children, it will be your brand they think of.

The following are some of the creative ways in which we can seamlessly blend your brand with our mission. We are always willing to revisit this plan to meet your specific needs or creative input.



PRODUCT PLACEMENT

Do you have a product that is used in zoos, gardening, science, landscaping or pet shops? We will use your product in our exhibits. We will also place that product in our virtual gift shop, along with accompanying videos or 3d models for our customers to get all the information they need from you.

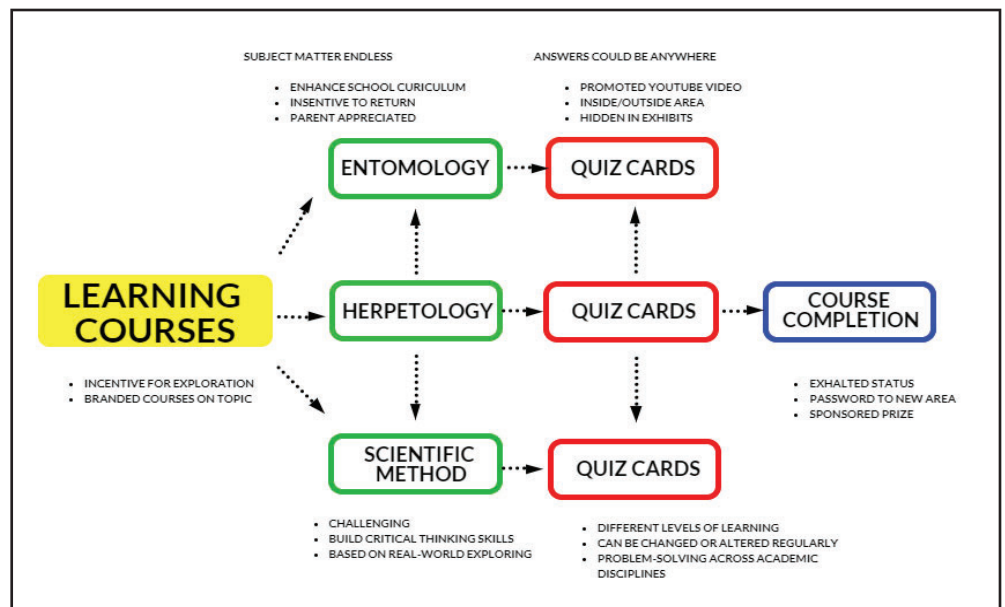


PROMOTE A YOUTUBE VIDEO OR SERIES YOU ALREADY SPONSOR.

We can also place your brand in our own YouTube videos that will stream into our virtual world.

PLACE YOUR BRAND IN OUR LEARNING COURSES!

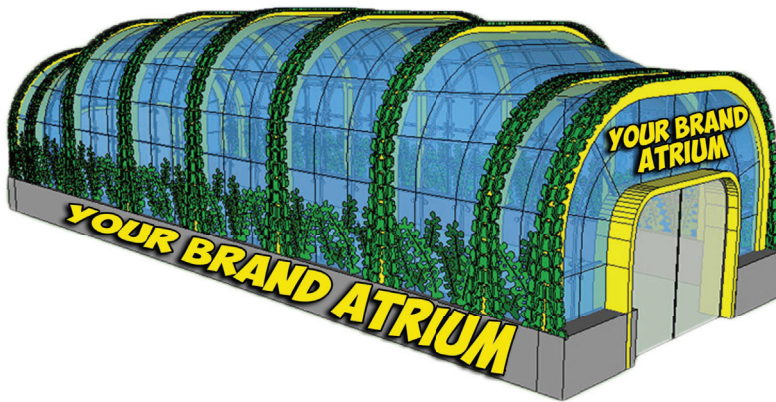
Our learning courses will be the key to opening up new worlds for kids to explore. All who experience this virtual world will want to explore more. Our learning courses will be incentivized with passwords and prizes for our visitors. Your brand can be placed on each quiz card in the learning courses.





INTERSTELLAR SPONSORS, BRAND AN EXHIBIT WITHIN OUR MAIN BUILDING.

The sciences have no limit of subject matter: insects, dinosaurs, plants, and the cosmos are just some of the subjects we can dedicate an exhibit to. As visitors traverse through our virtual building, your brand will become associated with their favorite subjects.



GALACTIC SPONSORS, BRANDING THE SATELLITE BUILDINGS ON THE GROUNDS

Outside our main building, we will have buildings dedicated to different learning courses such as botany, horticulture, composting and more.



COSMIC SPONSORS, BRANDING OUR MAIN BUILDING.

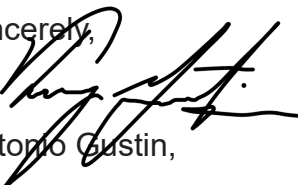
At this level of branding, your brand will be associated with the entire virtual endeavor and all that it offers. In our media promotions, your brand will be seen first and largest, solidly representing you as the main provider of this virtual adventure

2 YEAR DEAL	COSMIC SPONSOR \$10K+	GALACTIC SPONSOR \$7K+	INTERSTELLAR SPONSOR \$5K+	PLANETARY SPONSOR \$2K+
GOODS & SERVICES PLACED IN GIFT SHOP	✓	✓	✓	✓
PRODUCT PLACEMENT IN EXHIBITS	✓	✓	✓	✓
SPONSOR PLACEMENT IN OUR YOUTUBE VIDEOS	✓	✓	✓	
BRANDING OF LEARNING COURSE	✓	✓	✓	
BRANDING OF EXHIBIT HALLS IN MAIN BUILDING	✓	✓	✓	
BRANDING ON SATELLITE BUILDINGS	✓	✓		
BRANDING ON MAIN BUILDING	✓			

We are looking forward to partnering with you in an endeavor to bring a higher level of Elearning to the world and at the same time a sense of relief to families everywhere. The modern history of humans is full of examples of children who were inspired to pursue science. Those children went on to make discoveries that elevated all of humanity. As with our live show, we never know when the child before us is going to be the next Newton, Einstein, Faraday, or Curie. Our goal is to create a world where, in these “uncertain times,” that child will still have the opportunity for inspiration in an engaging environment.

The mission of the Gateway Science Project has been to better the future by creating a population of scientifically literate children. The tools of science are simple in their form but have proven to be the most powerful tools we have for the future of our species. All it takes to light a wildfire of life-long learning is a single moment of awe. Even in a COVID world we are committed to that moment of awe. This virtual world has great potential to continue that mission in a COVID world and beyond.

We appreciate your interest in partnering with us to make the future a brighter place for all of humanity and look forward to the day we begin that venture together.

Sincerely,

 Antonio Gustin,



creepycrawlyzoo



ibugwhisperer



tonyscreepycrawlyzoo



ibugwhisperer

Excite! Educate! Inspire!

We light wildfires of passionate scientific curiosity and provide the resources to fan those flames for a lifetime.

Our exciting and engaging education strategy aims to create infectious excitement and scientific curiosity amongst students.

Over the last two decades, Tony's Creepy Crawly Zoo has visited over a million students across the country and held monthly performances at the children's science museum, Discovery World, since 2016. The show is insured, USDA permitted, and approved for travel. It generates a plethora of positive media attention and is a regular feature on regional TV talk shows.

While insects and nature are the methods of choice, our vision is about the future we leave to the next generation. Recent events have made it clear that that future is under threat. Our mission is to provide future generations with the knowledge required to make the world a better place for their children and the tools needed to make the best possible decisions. That tool is science. Please join us in the fight for that future!

To find out how you can join us in making the world a better place, visit www.creepycrawlyzoo.com or email thebugwhisperer@gmail.com

Tony Gustin is simply one of the best science educators/entertainers I have ever seen.

Shawn Carlson, PhD

Tony's Creepy Crawly Zoo



Tony's Creepy Crawly Zoo is a dynamic, theatrical, powerful, and fun live show that brings living invertebrates to venues for all audience members to touch and hold. The expert design of the program empowers youth with raging scientific curiosity. We use insects as a tool because they are everywhere and affect everything. They are alien, bizarre, strange, abundantly available, and just cool. This experience universally raved about by parents and educators alike and it leaves children screaming for more.

— My Science Diary

My Science Diary is a custom designed booklet that begins to mold this obsession we inspire into science. It is an introduction to the tenets of science and critical thinking. A simple guide to develop the most elemental of scientific skills, observation. This booklet can be used for all of the scientific endeavors we inspire such as insects, herpetofauna, weather, birds, plants, stars, and beyond.

iBugwhisperer™ YouTube Series

This exciting new series will explore the world of invertebrates and herpetofauna. The episodes are fast, fun, silly, informative and full of imaginative special effects. We search for inverts and herps in our own backyards as well as taking our exploration to indoor observation labs (terrariums). Through the series we introduce the scientific value of keeping pets and teach the experienced hobbyist how to turn their current endeavors into scientific research.



— The Capps Exhibit

Once the world's largest private insect collection, The Capps exhibit has been exhibited all over the country including Disney's Epcot Center. It is the accumulation of a lifelong love with insects by world renowned collector, Dan Capps. In 2018, Dan Capps donated his entire collection to the Gateway Science Project. The exhibit is valued at nearly half a million dollars and divided into two sets of the most breathtaking specimens from all around the globe.